



MINING QUALIFICATIONS AUTHORITY

INCWANJANA
NGOKUSEBENZA
KWEMIGOMO
NGOKOMTHETHO
WOKUKHUTHAZA
UKUTHOLA ULWAZI KA
2000, [UMTHETHO
ONGUNOMBOLO 2 2000] 54
KA 2002

OKUQUKETHWE

1. Izincazelo
2. Isingeniso
3. Inhloso
4. Okuphokophelwe
5. Uhlaka lwe- MQA
6. Imisebenzi ye- MQA
 - 6.1 Umbono
 - 6.2 Umgomo
 - 6.3 Igunya ngokoMthetho
7. Uhlaka lweKomiti le- MQA
8. Usizo olutholwa ngamalunga omphakathi
9. Lutholakala kanjani lolu sizo
10. Amalungiselelo emigomo ezobandakanywa ekumisweni kwenqubomgomo
11. Izinhlobo zamarekhodi
 - 11.1 Ukushiywa ngaphandle kwamarekhodi
 - 11.2 Amarekhodi atholakala ngokushesha
 - 11.4 Amarekhodi atholakala ngokulandela imigomo ye- PAIA
 - 11.5 Imali Ekhokhwayo
12. Izizathu zokwenqaba namarekhodi
13. Inqubo yokwedlulisela phambili isicelo
 - 13.1 Izikhathi ezinqunyiwe zokwedlulisela phambili isicelo
 - 13.2 Indlela yokubhekana nosicelo esedluliselwe phambili
14. Ulimi
15. Ukutholakala

16. Kucashunwe

1. Izincazelo

Izindima & nemibandela	Izincazelo
Isikhulu soLwazi	<p>Maqondana neSigungu seziPhathimandla seziMayini semfundo ePhakeme lapha esibizwa nge- "MQA" yiSikhulu esiyiNhloko esiPhethe (CEO).</p> <p>Isikhulu solwazi singadlulisa amandla noma umsebenzi esithweswe wona lesi Sikhulu soLwazi ngokwaloMthetho siwedlulisele kwi-Phini leSikhulu soLwazi.</p>
IPhini leSikhulu soLwazi	<p>I-CEO kufanele ikhethe umuntu ozoba iPhini leSikhulu soLwazi ukuze enze ukuthi i-MQA itholakale noma ifinyeleleke kulabo abafuna ukufaka izicelo zolwazi zitholakale kulabo abacela amarekhodi. ISikhulu soLwazi yisona esingaqondisa silawule ngaphezulu kwePhini leSikhulu solwazi se- MQA.</p>
Ocela Ulwazi ngaye	<p>Lowo ofaka isicelo ecela amarekhodi aqukethe ulwazi ngaye .</p> <p>'Ulwazi lomuntu ngaye ' kushiwo ulwazi ngomuntu othile ongakhonjwa okubandakanya kodwa kungelokhu kuphela:</p> <ul style="list-style-type: none"> ·ulwazi oluphathelele nobuhlanga, ubulili, ukukhululwa, isimo sezomshado, ubuzwe, indabuko noma imvelaphi, ibala, ukuzikhethela kwezocansi, impilo ngokomzimba noma ngokwengqondo, inhlalakahle, ukukhubazeka, inkolo, unembeza, inkolelo, isiko, ulimi noma ukuzalwa kwalo muntu; ·ulwazi oluphathelele nomlandu wezemfundo noma ezokwelashwa, noma icala lobugebengu lomuntu noma ulwazi oluqondene nezimali okuthinteka khona lowo muntu; ·noma iyiphi inombolo engakhonjwa, uphawu noma yini eyabelwe lowo muntu; ·ikheli, ukugxiviza izithupha noma uhlobo lwegazi lwalo muntu; ·izimvo zakhe, imibono noma lokho akukhethile lowo muntu, ngaphandle uma lokho kuphathelele nomunye umuntu noma kuphathelele nesicelo somxhaso, indebe noma umklomelo oqondiswe komunye umuntu; ·ukubhalelana noma izincwadi ezithunyelwe yilowo muntu eziyimfihlo noma izincwadi ezingaveza obala ingqikithi yalapho zivela khona; ·izimvo nemibono yomunye umuntu ngaye lowo muntu ofaka isicelo ; ·izimvo nemibono yomunye umuntu mayelana nesipho, indebe, umklomelo onikwe lowo muntu lapho kuvela khona izimvo noma imibono yomunye umuntu; kanye ·negama lalowo muntu lapho livela khona nolwazi lwakhe

	noma oluphathelene naye lowo muntu noma lapho ukudalulwa kwegama kuzoveza obala ulwazi ngomuntu osekuphele iminyaka engaphezele kama-20 afa/ashona.
Umfakisisicelo	Noma imuphi umuntu ofaka isicelo ecela amarekhodi e-MQA.
Umuntu okukhulunywa ngaye	Maqondana nesicelo sokuthola amarekhodi umuntu okukhulunywa ngaye kushiwo: · noma imuphi umuntu (kubalwa, noma kungeloku kuphela), uhulumeni wamanye amazwe, inhlango yomhlaba wonkana ngale kwalowo ofake isicelo kanti futhi ngokwenhloso yesigaba 34 saloMthetho, uma kukhulunywa ngegama "umuntu" ezindimeni (a) no (b) kufanele kuthathwe ngokuthi kukhulunywa "ngomuntu ophilayo".
IsiPhathimandla esiQondene	Maqondana ne-MQA, isiPhathimandla esiQondene kushiwo uNgqongqoshe obhekele i-MQA okunguNgqongqoshe wezeMisebenzi.
IKhomishani yamalungelo eSintu	Kushiwo iKhomishani yamaLungelo eSintu okukhulunywa ngayo esigabeni 181 (1) (b) soMthethosisekelo.
Irekhodi	Maqondana ne-MQA irekhodi kushiwo noma iluphi ulwazi oluqoshiwe noma ngayiphi indlela olusezandleni noma olungaphansi kwesandla sesikhungo sombuso noma simiswe yisona lesi sikhungo sombuso .
Izinsuku	"Uma kukhulunywa ngenani lezinsuku ezinqunyiwe zokwenza noma isiphi isenzo, noma ngokwayiphi enye inhloso, lezi zinsuku ziyobalwa ngokushiya ngaphandle usuku lokuqala nokubala usuku lokugcina, ngaphandle uma usuku lokugcina kuba iSonto noma yiholide, kuleso simo lezi zinsuku ziyobawa ngokushiya ngaphandle usuku lokuqala nokushiya ngaphandle usuku lwangeSonto noma iholide"
Izinsuku zokusebenza	Kushiwo noma iluphi usuku ngaphandle koMgqibelo, iSonto neholide, njengoba kuchaziwe esigabeni 1 soMthetho wamaHolide ka 1994 (uMthetho onguNombolo 36 ka 1994).

2. Isingeniso

UMthetho wokuKhuthaza ukuthola ulwazi (PAIA), uMthetho ongunombolo 2 ka 2000 (lapha obizwa ngoMthetho) waqala ukusebenza ngomhlaka 2 kuNdasa ngo 2001, njengesisekelo sokubaluleka kokutholakala kolwazi ngumphakathi, ongenamfihlo, wentandoyeningi, noveza noma obeka konke obala. Lo Mthetho ufezekisa okoMthetho okukhulunywa ngakho esigabeni 32 soMqulu wamaLungelo eSintu woMthethosisekelo futhi kufanele uhunyushwe njengoMthetho ofezekisa ilungelo ngokomthethosisekelo.

- Leli lungelo lithi wonke umuntu unelungelo lokuthola:
 - (a) noma iluphi ulwazi oluphethwe umbuso;kanye
 - (b) nanoma iluphi ulwazi oluphethwe ngomunye umuntu futhi oludingekayo ukuze kusetshenziswe noma iliphi ilungelo.
- Kufanele kukhishwe uMthetho kazwelonke ukuze kusebenze leli lungelo futhi ungamisa imigoqo eyamukelekile ukunciphisa umthwalo wokuphatha nowezimali wombuso.

3. Okuphokophelwe

Okuphokophelwe yi- PAIA yilokhu:

- Ukugcina noma ukufeza ilungelo ngokomthethosisekelo lokuthola noma iluphi ulwazi njengoba kushiwo lapha ngenhla;
- Ukumisa imikhawulo evumelekile kulelilungelo lokuthola ulwazi okuhloswe ngayo ukuba kuvikelwe amalungelo abantu okuba nengasese, ulwazi olufihlekile lwezentengiso nokuqiniseka ngempumelelo, ikhono nokuphatha ngendlela eyiyo;
- Ukuzimelelisa ilungelo lokuthola ulwazi namanye amalungelo akhona kumthethosisekelo;
- Ukuqhubekisela phambili isiko lamalungelo esintu nobulungiswa kwezenhlalo;
- Ukusungula izindlela nezinqubo ezizokwenza abantu bakwazi ukuthola amarekhodi ngokushesha, ngale kokukhokha izimali ezishisiwe nakalula ngale kobunzima;
- Ukuqhubekisela phambili ukuveza obala, ukuphendula ngomsebenzi nokuphatha ngempumelelo;
- Ukuhlomisa ngolwazi nokufundisa bonke abantu ukuba baqonde amalungelo abo ngokwaloMthetho baqonde imisebenzi nokusebenza kwezikhungo zomphakathi nokuthi bahlolisise futhi babambe iqhaza kwinqubo yezikhungo zomphakathi yokuthatha izinqumo ezithinta amalungelo abo.

4. Inhloso

Inhloso yalencwanjana ngukwazisa umuntu ukuthi angawathola kanjani amarekhodi agcinwe yi-MQA (**uMnyango wezeZindlu kaZwelonke**), ukuze kufezeke okushiwo isigaba 14 soMthetho.

5. Uhlaka I we-MQA

Uhlaka lwe-MQA lubunjwe yiHovisi leSikhulu esiyiNhloko eselekelelwa yilezi zinhlaka ezilandelayo:

Isikhulu esiyiNhloko yeMisebenzi:

Ukuhlela amaKhono
Ukuqinisekisa amaQophelo
Ukufundiswa
Ukuklama Izindima
Ukuhlela Okuzokwenziwa

Isikhulu esiyiNhloko yeziMali

Ukuphathwa kwezimali
Ukuthengwa kwempahla nosizo
Ukubuyisela noma ukukhokha izimali zokukhuthaza amakhono
Ukubhekana neziNgozi nokukhwabanisa
Izindlela zokuphathwa kolwazi

Imenenja yoSizo lweNhlango

Amandla nolwazi lwabantu
Ezokuxhumana
Ukuphathwa kwamahovisi nezinto ezisetshenziswayo
Ukuphathwa kweNhlango
Ukwakha amakhono abathintekayo

Uhlaka lweNhlango oluphelele luyatholakala uma lucelwa.

6. Imisebenzi ye-MQA

Isigungu seziPhathimandla seziMayini seMfundo Ephakene (MQA) yisigungu esimiswe ngokomthetho esinabantu abamele uMbuso (uMnyango wezokuMbiwa naMandla) Abaqashi baseziMayini (I-Chamber of Mines) kanye nabasebenzi (izinyunyana) I-National Union of Mineworkers (NUM) kanye ne - United Association of South Africa (UASA).

I-MQA iyisigungu somphakathi ngokoMthetho wezeMpilo nokuPhepha ka 1996 futhi kufanele sigcini lokhu okushiwo uMthetho wezokuPhatha izimali zoMbuso ka , 1999;

I-MQA ibuye ibhaliswe futhi ngokweSigungu soMkhakha weMfundo nokuQeqesha [Sector Education and Training Authority] (SETA) nangokoMthetho wokuThuthukiswa kwamaKhono (Skills Development Act) ka1998;

I- MQA ibhaliswe njenge-Education, Training and Quality Assurer (ETQA) okuyiSigungu seziPhathimandla sokuQinisekisa amaQophelo eMfundo noQeqesho ngokoMthetho weSigungu seziPhathimandla zeMfundo ePhakeme eNingizimu Afrika (South African Qualifications Authority Act) ka 1995.

Imisebenzi ye- MQA yilena elandelayo;

- Ukuthuthukisa nokusebenza kwecebo lamakhono kulomkhakha (ngaphakathi komhlahlandlela wohlelo lokuthuthukiswa kwamakhono lukazwelonke);
- Ukuthuthukisa imfundo ephakeme nemigomo yoqeqesho kwalomkhakha ukuze kubhaliswe kuMhlahlandlela weMfundo ePhakeme kuZwelonke ;

- Ukuba noma ukusebenza njengesikhungo esikhiqiza imigomo kuloMkhakha weziMayini nezokuMbiwa
- Ukusungula, ukubhalisa, ukuphatha nokuqhubekisela phambili imigono yokufunda namakhono;
- Ukukhokha noma ukubuyisela imixhaso yokuthuthukisa amakhono ngentela yamakhono kulomkhakha;
- Ukugcina amaqophelo, imfundo ephakeme nezokufundisa;
- Ukubika kuMqondisi-Jikelele wezeMisebenzi ngemali engenayo nezindleko kanye nokusetshenziswa kwecebo lamakhono kuloMkhakha;
- Ukuqasha abasebenzi abadingekayo noma abenele abazoqhuba umsebenzi waso; kanye
- nokwenza noma imuphi umsebenzi esethweswe wona ngokoMthetho wokuThuthukiswa kwamaKhono kanye noMthetho weziNtela zokuThuthukiswa kwamaKhono noma ohambisana nezinhliso zalemithetho.

I-MQA inawo wonke amandla adingekayo ukuze ikwazi ukwenza imisebenzi yaso njengoba ibhalwe ngenhla kanye noma imaphi amandla esithweswe woma ngokoMthetho wokuThuthukiswa kwamakhono.

6.1 Umbono

Umbono we -MQA ukuba nolwazi namakhono enele nafanele ukuze yelekelele umkhiqizo, ezempilo nezokuphepha kwabasebenzi kanye neziguquko kuloMkhakha wezeziMayini nezokuMbiwa.

6.2 Umgomo

Ukwenza -lula nokuqhubekisela phambili ukuthuthukiswa kwamandla nolwazi lwabasebenzi, I-MQA ithembisa :

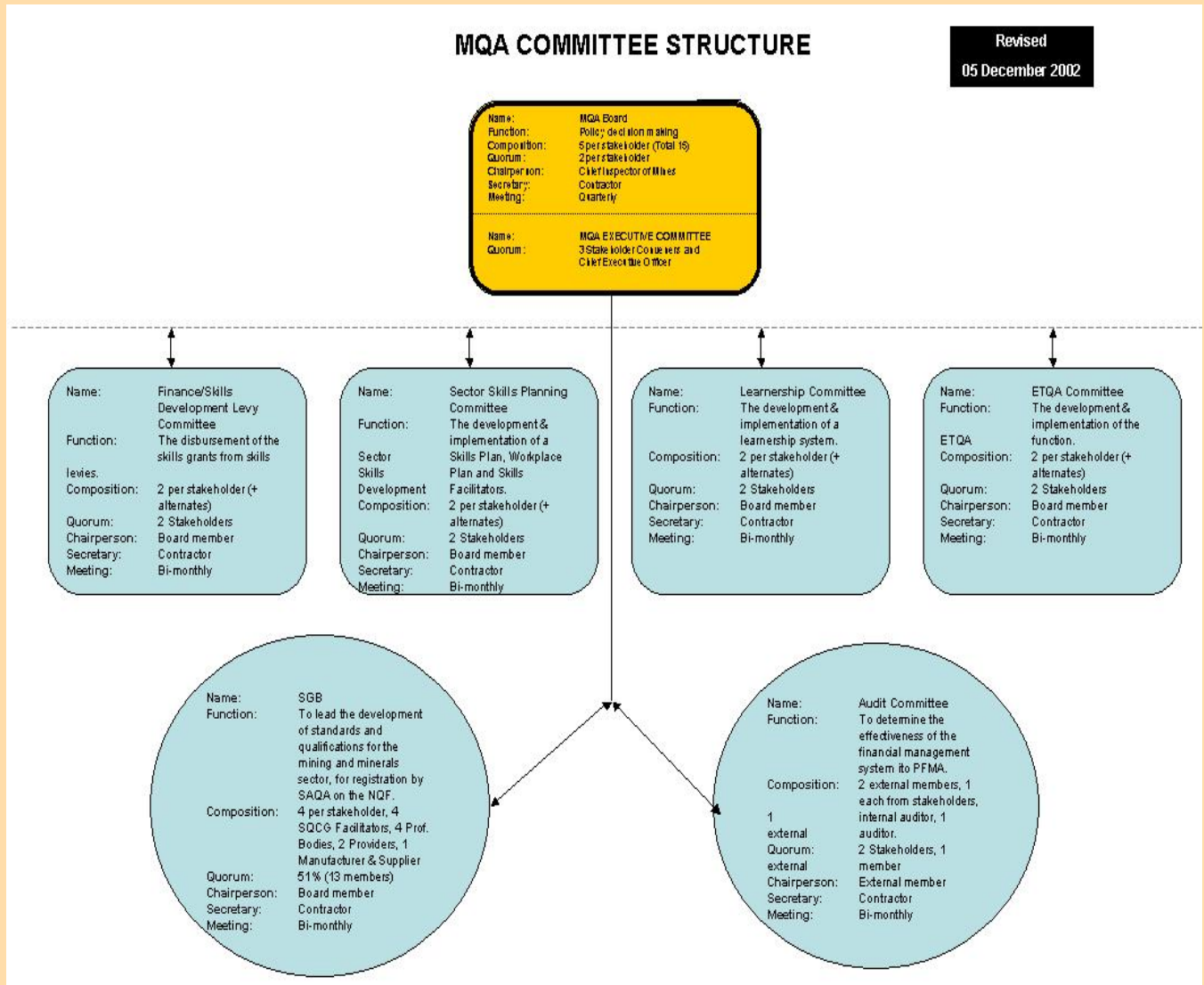
- Ukuthuthukisa nokwenza-lula ukusebenza kweCebo lamaKhono kuloMkhakha;
- Ukukhiqiza imigomo nezinga lemfundo ephakeme;
- Ukusungula, nokuphatha nokuqhubekisela phambili imigomo yezokufundisa nokwandisa amakhono nokufundela umsebenzi;
- Ukugcina amaqophelo nemigomo yokuqeqesha;
- Ukukhokhela noma ukubuyisela imali yokuthuthukisa amakhono;

6.3 Igunya loMthetho

Igunya ngokoMthetho le- MQA ilithatha kulemithetho elandelayo:

- UMthetho wezeMpilo nokuPhepha eziMayini , (UMthetho ongunombolo 29 ka 1996)
- UMthetho wokuThuthukisa Amakhono (uMthetho ongunombolo 97 ka 1998)
- UMthetho weMfundo ePhakeme eNingizimu Afrika, UMthetho ongunombolo 58 ka 1995)

7. Uhlaka lweKomiti (see end of document)



8. Usizo olutholwa ngamalunga omphakathi ngokwesigaba 14 (1) (F)

Umsebenzi ophambili we- MQA ngukwenza-lula ukuthuthukiswa kwamakhono emkhakheni weziMayini nezokuMbiwa ngokoMthetho wokuThuthukiswa kwamakhono ka 1998.

9. Lutholakala kanjani lolu sizo

Amalunga omphakathi angathola usizo ngehovisi lePhini leSikhulu soLwazi. Imininingwane yaso nansi lapha ngezansi:

Igama	Darion Barclay
Inombolo yocingo	011 630 3500
Isikhahlamezi	011 630 3596
Ikheli lekhompuyutha	darionb@mqa.org.za
Ikheli leposi:	IPhini leSikhulu soLwazi , Isigugu seziPhathimandla zeziMayini seMfundo ePhakeme PO Box 118, MARSHALLTOWN, 2018.
Ikheli lomgwaqo:	Union Corporation Building, 4 th floor, MARSHALLTOWN, JOHANNESBURG, GAUTENG, 2000.
Izikhathi zomsebenzi	07:30 - 09:30 09:45 - 12:15 13:00 - 14:30 14:45 - 16:00
Ingosi:	http://www.mqa.org.za

Zonke izicelo zamarekhodi kufanele ziqondiswe kwiPhini leSikhulu soLwazi kusetshenziswa ifomu elinqunyiwe. Ifomu elinqunyiwe uma seligcwaliswe ngokuphelele lingaposwa, lithunyelwe ngesikhahlamezi noma lithunyelwe ngekhompuyutha (e-mail) kwiPhini leSikhulu soLwazi kusetshenziswa imininingwane enikwe lapha ngenhla.

Ifomu elinqunyiwe lixhunyelwe lapha Isijobelelo A

IPhini leSikhulu solwazi kufanele kuthi uma lithola isicelo solwazi lithathe isinqumo singakapheli isikhathi esiyizinsuku ezinga-30 ngokuthi lizonikezela yini ngalawo marekhodi aceliwe noma cha. Lowo ofake isicelo kufanele aziswe ngesinqumo njengoba kushiwo esigabeni 53 (2) (e)

IPhini leSikhulu soLwazi okuthunyelwe kuso isicelo sokuthola amarekhodi lingangezelela noma lelule izinsuku ezingamashumi ama-30 okukhulunywa ngazo esigabeni 25 (1) liseengezelele noma selulwe ngezinye izinsuku ezingama-30 uma isicelo kungesamarekhodi ayisibalo esikhulu noma uma kudingeka ukubonisana phakathi kwezihlaka ukuze kutholakale amarekhodi. Lowo ofake isicelo kufanele aziswe ngezizathu zokwengezelelwa kwesikhathi.

Uma isicelo samukelwe, iPhini leSikhulu soLwazi kufanele ngaphambi kokuba liqhube isicelo lazise lowo ofake isicelo ngemali ekhokhwayo ngokusho kwendima 10.4 yalencwanjana.

Uma kwenzeka iPhini leSikhulu soLwazi lithola isicelo okufanele sidingidwe isikhungo somphakathi, iPhini lesiKhulu soLwazi kufanele kuthi zingakapheli izinsuku eziyi-14 ledlulisele esikhungweni esiqondene lesi sicelo bese lazisa lowo ofake isicelo ngalokho kwedluliswa.

10. Amalungiselelo emigomo ezombandakanyewa ekumiseni inqubomgomo

Ukumiswa kwemibhalo yenqubomgomo neCebo lamaKhono loMkhakha kwenziwa ngendlela ehleliwe esekelwe phezu kocwaningo olujulile. Kulokhu umgomo wokubonisana uphoqelekile kuzo zontathu izinhla zeBhodi ezinabamele uMnyango wezokuMbiwa naMandla, abamele uMbuso nabamele I-Chamber of Mines, abamele osomabhizimisi abahlelekile kanye neNyunyana yabasebenzi baseziMayini I- National Union of Mineworkers (NUM) kanye ne-United Association of South Africa (UASA) nabamele ezabasebenzi abahlelekile.

Indlela yokubonisana yesekelelwa izihlaka zokuphatha ezisebenza kahle njengeBhodi, Ikomiti eliphethe (EXCO) kanye namanye amakomiti ehlukeni.

11. Izinhlobo zamaRekhodi

Ukutholakala kwamarekhodi abhalwe lapha yilawo okufanele acelwe ngokusho koMthetho. Lamarekhodi angacelwa kwiPhini leSikhulu soLwazi ngokulandela inqubo yokufaka isicelo. Izinhlobo zamarekhodi zehlukanisiwe kukhona amarekhodi atholakala ngokushesha bese kuba khona amarekhodi atholakala ngokulandela inqubo yokufaka isicelo emiswe ngokoMthetho.

11.1 Ukushiya ngaphandle kwamarekhodi

Isigaba 5 soMthetho sikubeka kucace ukuthi i-PAIA isebenza ngale kokunaka okushiwo eminye imithetho engavimbela noma ithiye ukudalulwa kolwazi nengahambisani nokuphokophelwe noma okuthile okushiwo yi- PAIA. [Isigaba 5(5)].

11.2 AmaRekhodi atholakala ngokushesha

Amarekhodi abhalwe kuloluhla ayatholakala nje uma ecelwe ngale kokuba umuntu afake isicelo ngokoMthetho. Kungaxhunyanwa nePhini leSikhulu soLwazi ukuze kutholakale lamarekhodi, atholakala ukuze ahlolwe, athengwe noma kwenziwe imifanekiso uma sekukhokhwe imali emiswe endimeni 11.4 lapha ngezansi.

Ulwazi olukhethiwe lutholakala mahala ezimweni ezithile uma uvakashela ingosi ye -MQA: <http://www.mqa.org.za>.

Amarekhodi atholakalayo ku-MQA:

Indikimba	Isinga-ndikimba
Ukuhlelwa kwamakhono	Icebo lamaKhono loMkhakha Imibiko yesigamu sonyaka yoMnyango wezabaSebenzi Isivumelwano sokuSebenzisana noMnyango wezabaSebenzi Imininingwane yamaCebo amakhono ezindawo zokusebenza atholakele neMibiko yoQeqesho yoNyaka
ETQA	Uhla lwaBenza uQeqesho abaGunyaziwe, Abahlolayo, nabaHlolisisayo

Ezokufunda	Uhla lwezifundo, izinhlelo zamakhono nezokufundela umsebenzi Imininingwane yezinto zokufundiswa esenziwe
Ukumiswa kwamaQophelo	Imininingwane yamaqophelo nezifundo eziphakeme ezimisiwe zathunyelwa kwi-SAQA Uhla lwamaQophelo nezifundo eziphakeme ezimisiwe
Imisebenzi ehleliwe	Uhla lwemisebenzi ehleliwe Uhla Lwemifundaze
EzokuBusa	Uhla lwamaLunga eBhodi namalunga eKomiti Imibiko yokuHlolwa kweBhodi namaKomiti
Ukuphatha	Uhla lwezikhala zomsebenzi Izinhlelo zeNhlangotho Umbiko woNyaka
Izimali	Imininingwane yemali engenayo nezindleko Ukukhokha kwemixhaso ephoqelekile Ukuqokwa kwamaThenda Izivumelwano zokusebenzisana

11.3 Amarekhodi atholakala ngokusho kwe-PAIA

Lamarekhodi abhalwe lapha ngezansi atholakala ngokufaka isicelo ngokusho koMthetho. Lamarekhodi angacelwa kwiPhini leSikhulu soLwazi ngokulandela inqubo yokufaka isicelo.

Indikimba	Isinga-ndikimba
Izinhlelo zamaKhono	Imixhaso ephoqelekile mayelana neCebo lamaKhono, Imibiko yonyaka ngezoQeqesho kanye nolwazi ngezimali oluphathelele nokufunda nokuQeqeshwa kwabadala (ABET)
EzokuFunda	Umxhaso wokufunda, Izinhlelo zokuLungiselelwa ukuphatha, Izinhlelo zokuThuthukiswa kwezokutholakala kweMfundo ePhakeme, Ulwazi lokuthuthukiswa kwezinto zokufunda, imininingwane yomfundi
ETQA	Isivumelwano sokuzwana (Memorandums of Understanding) kanye ne - SETA's noMnyango wezabaSebenzi boMbuso
Ukumiswa kwamaqophelo	Imininingwane yamalunga eThimba Lemisebenzi yobuChwepheshe nokukhokha kwezimali zomxhaso
Imisebenzi ehleliwe	Ukuqasha ngokuLinganayo kweNyuvesi, ukudala amabhizimisi amasha, imifundaze, imininingwane yabafundi
Ezokubusa	Amaminithi emihlangano yeBhodi namaKomiti, nesivumelwano sokuzwana noMnyango wezokuMbiwa naMandla
Ezezimali	Imali eyisabelo, Imali engukheshi esezandleni, Imibiko ngezindleko
Ezokuphatha	Icebo leBhizimisi

11.4 Izimali ezikhokhwayo

Ngokusho koMthetho zimbili izinhlelo zezimali ezikhokhwayo, okuyilezi

Imali yesicelo imali emisiwe ekhokha kanye, imali enqunyelelwe ngu R35,00. Lemali kufanele ikhokhwe ngaphambi kokuba kuqalwe ukubhekwa kwesicelo, futhi iPhini leSikhulu soLwazi kufanele libhalele lazise lowo ofake isicelo ukuthi kufanele akhokhe imali, ngaphandle uma lowo ofake isicelo ecela ulwazi ngaye qobo.

Imali yokunikwa ulwazi sekubalwa nemali yokwenza imifanekiso, ukuwafuna, ukuwalungisa, izindleko zokuposa uma kudingekile. Uma isikhathi sokuwalungisa singaphezulu kwamahora ayisithupha, kufanele lowo ofake isicelo akhokhe idiphozi eyingxenywe yokuthathu yemali ekhokhwayo, ngaphandle uma kungumuntu ocela ulwazi ngaye, Uma isicelo sichithwa iPhini leSikhulu soLwazi, imali ekhokhelwe ukunikwa noma ukutholakala kufanele ibuyiselwe.

Imali enqunyiwe ifinyeziwe ngokuhambisana neNgxenywe II yeSaziso sikaHulumeni esingunombolo (R187) esikhishwe ePhephabhukwini likaHulumeni lomhlaka 15 kuNhlolanja 2002.

Imali yokucela ekhokhwa ngumfakisicelo, ngale kwalowo ocela ulwazi ngaye ngokomthethonkambiso 7 (2).

ISIMO SESICELO

IMALI EKHOKHWAYO

Isicelo esisodwa nje	R35.00	
Umfanekiso waleNcwanjana ngokoMthethonkambiso 5C, ikhasi elingu-A4 ngalinye	R60.00	ikhasi
Ukwenziwa kabusha kombhalo ongu-A4 ngokomthethonkambiso 7(1) ngalinye	60	ikhasi
Umfanekiso wombhalo ngamunye ngekhasi elingu-A4 ngalinye	R 0.40	ikhasi
Umbhalo okukhumpuyutha ngendlela engafundeka ku- stiffy disk	R5.00	
Umbhalo okukhompuyutha ngendlela engafundeka ku- compact disc	R 40.00	
Izithombe ezibonakalayo ezingekhasi elingu-A4 usayizi noma ingxenywe yalo	R 22.00	
Umfanekiso wezithombe ezibonakalayo	R60.00	
Ukubhalwa kwerekhodi eliqoshiwe ngekhasi elingu-A4 noma ingxenywe yalokho	R12.00	
Umfanekiso werekhodi elizwakalayo	R17.00	

12. Izizathu zokuchithwa noma ukwenqatshwa kwamarekhodi

Lezi zicelo ezelandelayo ziyochithwa ngokusho koMthetho;

- Uma irekhodi elicelwayo kuyirekhodi leKhabinethi;
- Uma irekhodi elicelwayo kuyirekhodi lekomiti leKhabinethi;
- Uma irekhodi elicelwayo kuyirekhodi lomsebenzi wenkantolo wokwahlulela;
- Irekhodi elicelwayo kuyirekhodi lenkundla ekhethekile;
- Irekhodi elicelwayo kuyirekhodi lesikhulu esingumahluleli;
- Irekhodi elicelwayo kuyirekhodi lelunga elithile lePhalamende noma lesiShayamthetho sesiFundazwe;

Isicelo singachithwa futhi uma umfakisicelo engalandelanga inqubo ngemuva kokuba esazisiwe ngenhloso yokwenqatshwa kwesicelo sakhe yiPhini leSikhulu soLwazi.

UMthetho umisa izizathu lapho ukutholakala kwamarekhodi kungachithwa noma kwenqatshelwe. UMthetho ubuye umise ukutholakala kwamarekhodi uma lokho kuzokwenza kuzuze umphakathi ngokwesigaba 46.

Ngokwenhloso yalencwanjana, izizathu okungenqatshwa ngazo isicelo samarekhodi ezizibekwa lapha ngezansi. IPhini leSikhulu soLwazi kufanele ngokuhambisana nezigaba ezithile sinqabe noma sichithe isicelo samarekhodi ngalezi zizathu ezilandelayo:

- **Ukuvikela okuphoqelekile kwengasese lomunye umuntu okungumuntu ophilayo, njengokuthi uma ukudalulwa kuzombandakanya ukudalulwa okungalindelekile kolwazi ngalowo muntu qobo, kubalwa lapho nomuntu oshonile. [isigaba 34(1);**
- **Ukuvikela okuphoqelekile kwamarekhodi athile e-South African Revenue Service (SARS);**
- **Ukuvikela okuphoqelekile kolwazi lwezokuthengiselana lomunye umuntu njengezimfihlo zokuhweba, nolwazi ngezezimali, ezokuthengiselana, olwezesayensi noma olobuchwepheshe, ngale kwezimfihlo zokuhwebelana zomunye umuntu, okudalulwa kwazo kungalimaza izitshisekelo zalowo muntu kwezokuthengiselana noma ezezimali; noma ulwazi olunikwe ngomunye umuntu ngokwethembana ukudalulwa kungabeka omunye umuntu esimweni esingasihle kwezokuvumelana noma izingxoxo zokubuyisana, noma kubeke engozini omunye umuntu emincintiswaneni yokuthengiselana;**
- **Ukuvikelwa okuphoqelekile kolwazi oluyimfihlo lomunye umuntu [Isigaba 37(1)(a)].**
- **Ukuvikela okuphoqelekile kokuphepha komunye umuntu, nokuvikela impahla, uma ukudalulwa kungenzeka kubeke engozini impilo, nokuphepha ngokomzimba komuntu [Isigaba 38(a)];**
- **Ukuvikela okuphoqelekile kwamadokodo amaphoyisa kwinqubo yebheyili nokuvikelwa kokugcinwa komthetho nenqubo yomthetho, uma ukutholakala kwamarekhodi kungavunyelwe ngokwesigaba 60 (14) soMthetho weNqubo yamaCala obugebengu ka 1977(uMthetho onguNombolo 51 ka 1977) [isigaba 39(1)(a)];**
- **Ukuvikeleka okuphoqelekile kwamarekhodi okungavumelekile ukuba adululwe uma kuqhutshwa icala; uma irekhodi livikelekile ngokomthetho ukuba lingadalulwa ngokwecala eliqhubekayo ngaphandle uma umuntu lowo muntu onelungelo lokufihla ukungadalulwa ekhulula ukuba kungadalulwa [sigaba 40]**
- **Ukuvikeleka okuphoqelekile kolwazi locwaningo lomunye umuntu nokuvikela kolwazi locwaningo lwezikhungo zomphakathi, uma irekhodi liqukethe ulwazi ngocwaningo olwenziwayo noma oluzokwenziwa ngomunye umuntu okukhulunywa ngaye, ukudalulwa okungaveza obala lowo muntu okukhulunywa ngaye;**

13. Inqubo yokwedlulisela phambili isicelo

Imigudu ekhona ukubhekana nesinqumo seSikhulu soLwazi noma iPhini leSikhulu soLwazi ngesicelo zokuthola ulwazi ukwedlulisela phambili isicelo ngaphakathi ngokwesigaba 74-77 noma ukufaka isicelo enkantolo ngokwesigaba 78-82. Ukufaka isicelo enkantolo kungenziwa kuphela ngemuva kokuba inqubo yokwedlulisela phambili isicelo ngaphakathi isiqediwe.

Ukwedlulisela phambili isicelo ngaphakathi lokhu kusho ukudlulisela phambili isicelo ngaphakathi “kusiPhathimdanala esiQondene” ngokwesigaba 74 soMthetho. Uma sikhuluma nge-MQA kushiwo uNgqongqoshe wezeMisebenzi. Umfakisisicelo, lowo ocela ulwazi ngaye noma umuntu okukhulunywa ngaye mayelana nesicelo sokuthola.

Umfakisisicelo, kungaba umuntu ocela ulwazi ngaye, umfakisisicelo, ofakela omunye isicelo bangadlulisela phambili isicelo ngaphakathi noma bafake isicelo enkantolo bephikisana nesinqumo seSikhulu soLwazi noma iPhini leSikhulu soLwazi , Mayelana:

- nokwengezelelwa kwesikhathi sokubhekana nesicelo [Isigaba 26(3)(c); noma
- ukuchitha noma ukwenqaba nolwazi [Isigaba 25 (3) (c)] noma
- Ukukhokha imali, kungaba imali yesicelo [Isigaba 22] noma imali yokunikwa noma ukukhonjiswa , imali eyidiphozi yemali yokunikwa noma ukukhonjiswa [Isigaba 22]; noma
- Indlela yokunikezwa noma ukukhonjiswa [Isigaba 25 (2) (c)].

13.1 Izikhathi zokwedlulisela phambili isicelo

Ukuze sedluliselwe phambili ngaphakathi isicelo, umfakisisicelo , noma ocela ulwazi ngaye noma ofaka isicelo esikhundleni somunye kufanele agcwalise ifomu elinqunyiwe lokudlulisela phambili isicelo zingakapheli izinsuku ezingama-60 kusukela umfakisisicelo azisiwe ngesinqumo.

Omunye umuntu, kufanele adlulisele phambili isicelo ngefomu enqunyiwe zingakapheli izinsuku ezinga-30 kusukela lowo muntu azisiwe ngesinqumo.

Ukwedlulisela phambili isicelo sesidlulile isikhathi esinqunyiwe kungabhekwa kuphela uma kuthunyelwe izizathu ezizwakalayo sokwedlulisela phambili isicelo sekwedlule isikhathi. Ukwazisa ngesinqumo ngokwesigaba 75 (2) (a) (b) kuyonikwa IPhini leSikhulu soLwazi.

Ifomu egcwaliswe ngokuphelele kufanele isayidwe bese ithunyelwa kwiPhini leSikhulu soLwazi ngeposi, ngesikhahlamezi noma nge- e-mail.

Ifomu lokwedlulisa isicelo lixhunyelwe lapha Isijobelelo B.

13.2 Indlela yokuBhekana nosicelo esedluliselwe phambili

Iphini leSikhulu soLwazi kufanele lithumele amaphepha okwedlulisela phambili isicelo kuSiPhathimandla esiQondene zingakapheli izinsuku eziyi-10 zokusebenza. Leso Siphathimandla esiQondene kufanele sazise abanye abantu abathintekayo ngokushesha, kodwa zingakapheli izinsuku ezingama-30 ngeposi ngesikhahlamezi noma nge-*e-mail*, ngemuva kokuthola amaphepha okudlulisela phambili isicelo afakwe ngumfakisisicelo ephikisana nokuchithwa kwesicelo sakhe sokuthola ulwazi .

IsiPhathimandla esiQondene kufanele sazise umfakisisicelo othintekayo zingakapheli izinsuku ezingama-30 ngeposi, ngesikhahlamezi noma nge *e-mail* ngemuva kokuthola amaphepha okudlulisela phambili isicelo komunye umuntu mayelana nokutholakala kolwazi. IsiPhathimandla esiQondene kufanele sithathe isinqumo zingakapheli izinsuku ezinga-30 ngemuva kokuthola lukhu kuvela kwiPhini leSikhulu soLwazi.

Umfakisisicelo noma omunye umuntu kungathi zingakapheli izinsuku ezingama-21 ngemuva kokuba azisiwe abhale enze iziphakamiso ezibhekiswe kwiSiphathimandla esiQondene mayelana nokuthi yingani kufanele anikwe noma anganikwa ulwazi alucelayo ngokwesigaba 76 (5)

IsiPhathimandla esiQondene ngemuva kokubhekisisa amaphepha okwedlulisela phambili isicelo singanquma ukuqinisekisa isinqumo, noma sikhophe esaso isinqumo esikhundleni saleso ebesenziwe. Ngokushesha ngemuva kokuba sekuthathwe isinqumo ngokwedlulisela phambili isicelo kufanele kubhalelwe kwaziswe lowo obedlulisele phambili isicelo ngesinqumo, nabo bonke abanye abantu abathintekayo kanye nomfakisicelo.

Uma IsiPhathimandla esiPhethe sehluleka ukunikeza isaziso ngesinqumo saso zingakapheli izinsuku ezingama-30 sifakiwe kufanele kuthathwe ngokuthi ukwedlulisela phambili isicelo kuchithiwe kanti umfakisicelo angafaka isicelo enkantolo ngokwesigaba 77 (7).

14. Ulimi

NgokoMthethonkambiso ongunombolo 187 womhlaka 15 kuNhlolanja ngo 2002, isigaba 4 (1) , Incwanjana ye MQA ye-PAIA itholakala ngalezi zilimi ezilandelayo:

- IsiNgisi
- IsiZulu
- IsiTswana

15. Ukuthokalala

NgokoMthethonkambiso ongunombolo 187 womhlaka 15 kuNhlolanja ngo 2002, isigaba 4 (1), iyotholakala ngemuva kokwamukelwa iBhodi ye-MQA ngoMfumfu ku- 2006.

16. Kucashunwe

LeNcwanjana ilotshwe ngokuhambisana:

1. Nemihlahlandlela emiswe *kwiNcwanjana enguMkhombandlela wezikhungo zikahulumeni ngokwesigaba 14* elotshwe yiKhomishani yamaLungelo eSintu eNingizimu Afrika.
2. UMthetho wokuKhuthaza ukuThola ulwazi ka 2000, uMthetho ongunombolo 2 ka 2000.
3. Imithethonkambiso yoMthetho wokuKhuthaza ukuthola ulwazi, engunoMbololo R 187, yomhlaka 15 kuNhlolanja ku-2002.

ISIJOBELELO A

ISICELO SAMAREKHODI NGOKWESIGABA 18 SOMTHETHO
WOKUKHUTHAZA UKUTHOLA ULWAZI KA 2000, UMTHETHO
ONGUNOMBOLO 2 KA 2000 (54 ka 2002)

SIYA KU : IPhini leSikhulu soLwazi
Siqonde ngqo ku : Mnu Darion Barclay
Private Bag x 118
MARSHALLTOWN
2107

SIPHUMA KU:

IGAMA LOFAKA ISICELO:.....

IKHELI/ISIKHAHLAMEZI/IKHELI LEKHOMPUYUTHA:.....

.....

.....

Iminingwane yamarekhodi acelwayo:

.....

.....

.....

.....

.....

.....

ISAYIDWE: OFAKA ISICELO:.....

USUKU:.....

ISIJOBELELO B

UKUDLULISA ISICELO NGOKWESIGABA 74 SOMTHETHO
WEOKUKHUTHAZA UKUTHOLA ULWAZI KA 2000, UMTHETHO
ONGUNOMBOLO 2 KA 2000 (54 KA 2002)

SIYA KU : Iphini leSikhulu solwazi
Siqonde ngqo ku: Mnu Darion Barclay
Private Bag x 118
MARSHALLTOWN
2017

SIPHUMA KU:

IGAMA LOFAKA ISICELO:.....

IKHELI LEPOSI/ISIKHAHLAMEZI/ IKHELI LEKHOMPUYUTHA:.....

.....

.....

Imininingwane ngesicelo esidluliswayo:

.....

.....

.....

.....

.....

.....

SISAYIDWE OFAKA ISICELO:.....

USUKU:.....

UHLAKA LWEKOMITI LE-MQA

Ibukezwe ngomhlaka
5 Zibandlela 2002

1

Igama:	Ibhodi le-MQA
Umsebenzi :	Inqubomgomo nokuthatha izinqumo
Ukwakhiwa:	5 kwabathintekayo (Esewonke 15)
Inani labakhona elamukelekile:	2 kwabathintekayo
Usihlalo:	Umhloli oyiNhhloko wezokuMbiwa
Unobhala:	Oqashiwe
Imihlangano:	Ngezigamu zonyaka

Igama:	IKOMITI ELIPHETHE LE-MQA
Inani labakhona elamukelekile	3 kumakomiti athintekayo neSikhulu esiyiNhhloko

2

Igama:	Ikomiti lokuThuthukiswa kweNtela yezimali /Amakhono
Umsebenzi :	Ukukhokhwa kwezimali ezisetshenziswe ukuthuthukisa amakhono ngentela yamakhono
Ukwakhiwa:	2 kwabathintekayo (+abashitshana nabo)
Inani labakhona elamukelekile:	2 abathintekayo
Usihlalo:	Ilunga leBhodi
Unobhala:	Oqashiwe
Imihlangano:	Njalo ezinyangeni ezimbili

3

Igama:	Ikomiti LokuHlelwa kwamakhono oMkhakha
Umsebenzi :	Ukuthuthukiswa nokusetshenziswa kwamaCebo amakhono oMkhakha , namaKhono Ezindaweni sokusebenza nokwenza-lula ukuthuthukiswa kwamakhono
Ukwakhiwa:	2 kwabathintekayo (+abashitshana nabo)
Inani labakhona elamukelekile:	2 kwabathintekayo
Usihlalo:	Ilunga leBhodi
Unobhala:	Oqashiwe
Imihlangano:	Njalo ezinyangeni ezimbili

4

Igama:	Ikomiti LezokuFunda
Umsebenzi :	Ukuthuthukiswa nokusetshenziswa kwazindlela zezokufunda
Ukwakhiwa:	2 kwabathintekayo (+abashitshana nabo)
Inani labakhona elamukelekile:	2 kwabathintekayo
Usihlalo:	Ilunga leBhodi
Unobhala:	Oqashiwe
Imihlangano:	Njalo ezinyangeni ezimbili

5

Igama:	Ikomiti Le-ETQA
Umsebenzi :	Ukuthuthukiswa nokusetshenziswa kwamisebenzi ye-EQTA
Ukwakhiwa:	2 kwabathintekayo (+abashitshana nabo)
Inani labakhona elamukelekile:	2 kwabathintekayo
Usihlalo:	Ilunga leBhodi

Unobhala:	Oqashiwe
Imihlangano:	Njalo ezinyangeni ezimbili

6

Igama:	SGA
Umsebenzi :	Ukuhola ukuthuthukiswa kwamaqophelo nemfundo/ulwazi oluphakeme emkhakheni wezokuMbiwa ukuze kubhaliswe ne-SAQA nge-NQF
Ukwakhiwa:	4 kwabathintekayo 4 Abasizi be-SQCG, 4 Izikhungo zoNgoti, 2 Abaletha usizo, 1 kubaKhiqizi nabathuthi
Inani labakhona elamukelekile:	51 % (amalunga ayi-13)
Usihlalo:	Ilunga leBhodi
Unobhala:	Oqashiwe
Imihlangano:	Njalo ezinyangeni ezimbili

7

Igama:	Ikomiti lokuCwaninga amabhuku
Umsebenzi :	Ukuhlola ukuphumelela kokuphathwa kwezimali ngendlela ye-PFMA
Ukwakhiwa:	2 amalunga evela ngaphandle, 1 kulabo abathintekayo, 1 umcwaningi-mabhuku wangaphakathi 1 umcwaningi-mabhuku wangaphandle.
Inani labakhona elamukelekile:	2 kwabathintekayo, 1 ilunga langaphandle
Usihlalo:	Ilunga langaphandle
Unobhala:	Oqashiwe
Imihlangano:	Njalo ezinyangeni ezimbili